

nDatalyze Corp.

Machine-learning-based,
objective mental health assessments.

CSE:NDAT OTC:NDATF

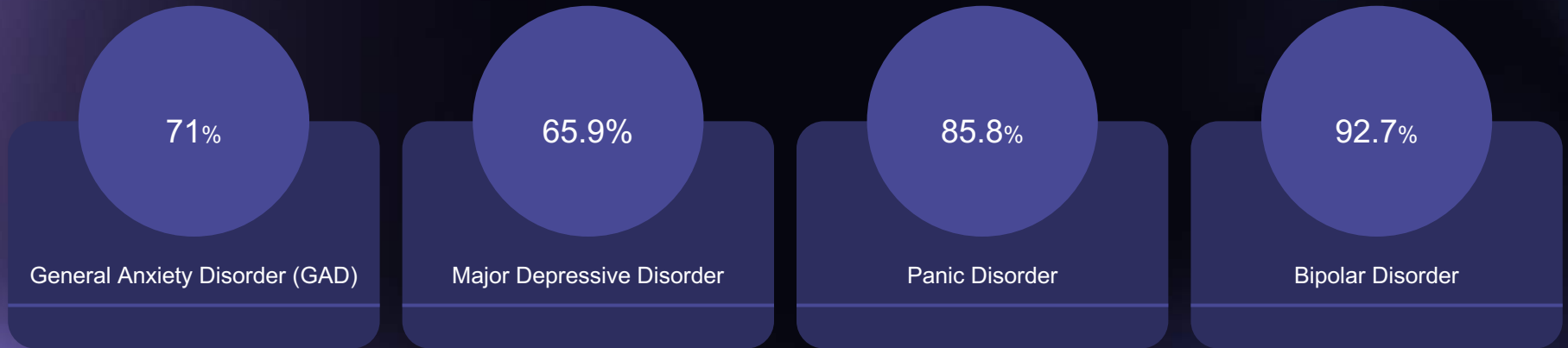
April 17, 2024

Forward Looking Statements

Certain information set forth in this presentation contains “forward-looking information”, including “future-oriented financial information” and “financial outlook”, under applicable securities laws (collectively referred to herein as forward-looking statements). Except for statements of historical fact, the information contained herein constitutes forward-looking statements and includes, but is not limited to, the (i) projected financial performance of the Company; (ii) completion of, and the use of proceeds from, the sale of the shares being offered hereunder; (iii) the expected development of the Company’s business, projects, and joint ventures; (iv) execution of the Company’s vision and growth strategy, including with respect to future M&A activity and global growth; (v) sources and availability of third-party financing for the Company’s projects; (vi) completion of the Company’s projects that are currently underway, in development or otherwise under consideration; (vi) renewal of the Company’s current customer, supplier and other material agreements; and (vii) future liquidity, working capital, and capital requirements. Forward-looking statements are provided to allow potential investors the opportunity to understand management’s beliefs and opinions in respect of the future so that they may use such beliefs and opinions as one factor in evaluating an investment. These statements are not guarantees of future performance and undue reliance should not be placed on them. Such forward-looking statements necessarily involve known and unknown risks and uncertainties, which may cause actual performance and financial results in future periods to differ materially from any projections of future performance or result expressed or implied by such forward-looking statements. Although forward-looking statements contained in this presentation are based upon what management of the Company believes are reasonable assumptions, there can be no assurance that forward looking statements will prove to be accurate, as actual results and future events could differ materially from those anticipated in such statements. The Company undertakes no obligation to update forward-looking statements if circumstances or management’s estimates or opinions should change except as required by applicable securities laws. The reader is cautioned not to place undue reliance on forward-looking statements

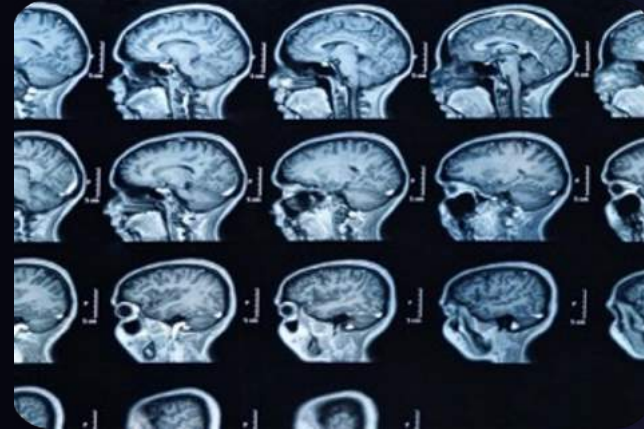
The Problem

Subjective mental condition mis/over-diagnosis results in mis/overprescription leading to poor outcomes with the resultant feedback loop clogging the mental health system and lowering the overall quality of societal mental health. Here are example mis/overdiagnosis rates:



The Solution

YMI is a human/machine-learning hybrid “mind” designed to significantly lower mental condition mis/overdiagnosis & mis/overprescription rates of common mental conditions. The process involves using a proprietary Reference Database to establish a societal baseline for multiple mental conditions, thereafter determining an individual’s divergence from the baseline in order to predict probabilities of having, or developing, specified mental conditions. The proactive process is designed to identify potential developing conditions so they can be treated before they become debilitating. The process is patent-pending.



Our Machine-learning Supervision

DR. KEITH COURTNEY



Chief Psychiatric Officer

Keith is a double board-certified psychiatrist and a Clinical Assistant Professor at the University of Calgary and was a faculty member at the University of Vermont, Dartmouth Medical School, and the University of Nevada.

DR. CAROL MALEC



Ph.D, MSc, BScN

Carol has 22 years of private practice counselling experience and is a Certified Counsellor with Canadian Counselling and Psychotherapy Association (CCPA). She's also a guest lecturer at the University of Calgary.

DR. ANDREA PROTZNER



PhD, EEG Specialist

Andrea is an EEG specialist, a member of the Hotchkiss Brain Institute, and an Associate Professor at the University of Calgary. As the head of the University's Brain Dynamics Lab, she's researching the link between neural dynamics and cognition.

DR. KELTIE DUGGIN



M.D.

Keltie is a clinical lecturer at the University of Calgary and a hospitalist physician leader in the neurorehabilitation units at the Foothills Medical Centre and Vernon Fanning Centre.

JAMES DURWARD



Director,
Chief Technical Officer

James' expertise lies in data science and technical product experience, including image analysis, pattern recognition, and specialized databases.

Our Clinical Studies

nDatalyze has launched two independent clinical studies - one is under the auspices of the Canadian Mental Health Association (Edmonton), and the other is with York University. Both studies are funded with existing capital. The Principal Investigators are:



Dr. Andrew Greenshaw, PhD,
FRSA, Professor of
Psychiatry and Neuroscience
at the University of Alberta



Dr. Bo Cao, PhD,
Canada Research Chair
in Computational
Psychiatry



Dr. Dale Stevens, PhD,
York University
Neuroscience

YMI
combines:

with...

01

“Memories”

A proprietary Reference Database of:

- Genetic expressions
- Childhood development/Parenting styles
- Traumas & Allergies
- diagnosed mental conditions
- Physical conditions
- Lifestyle choices and life experiences
- Brain wave (EEG) data, and more...

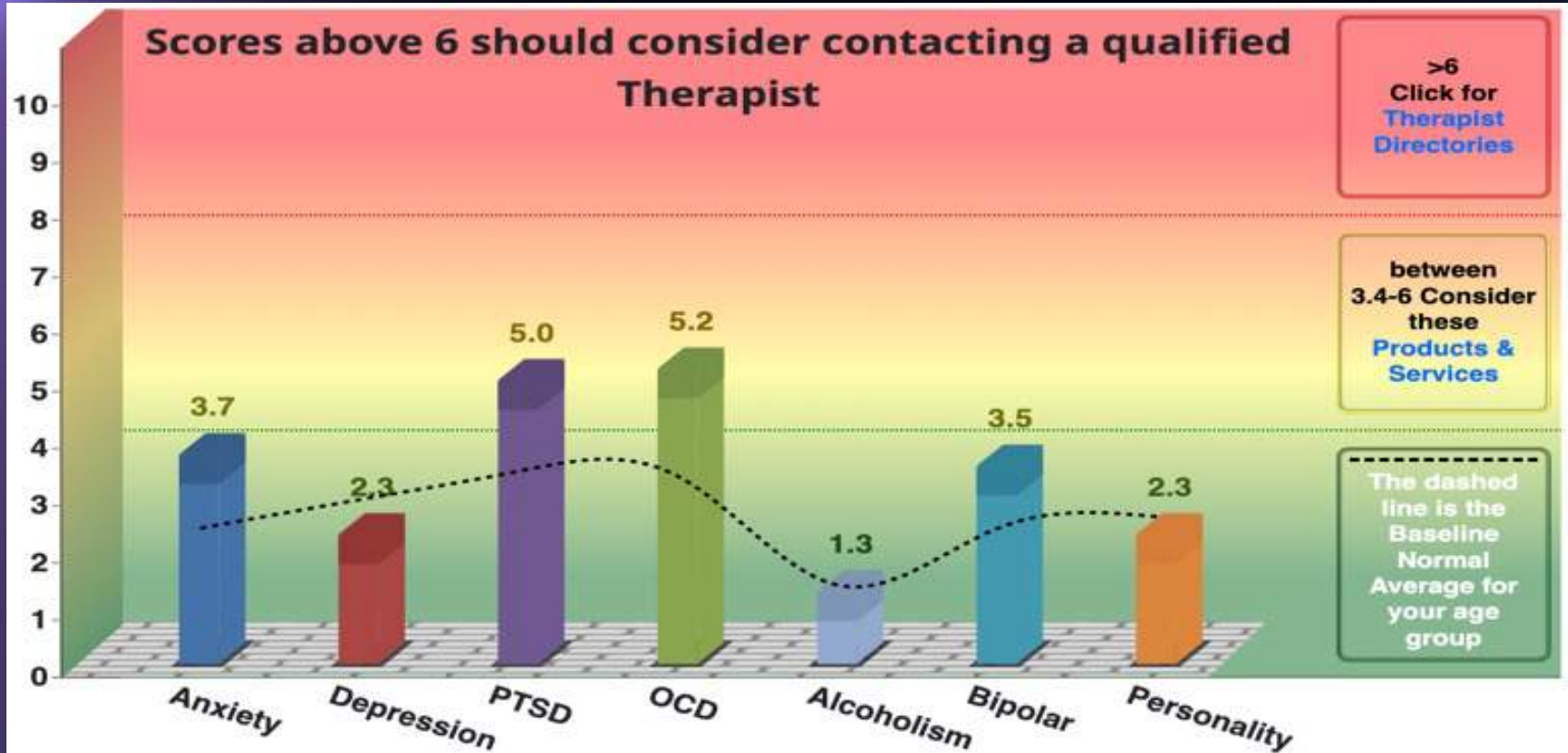
02

An advanced, predictive psychiatric assessment system

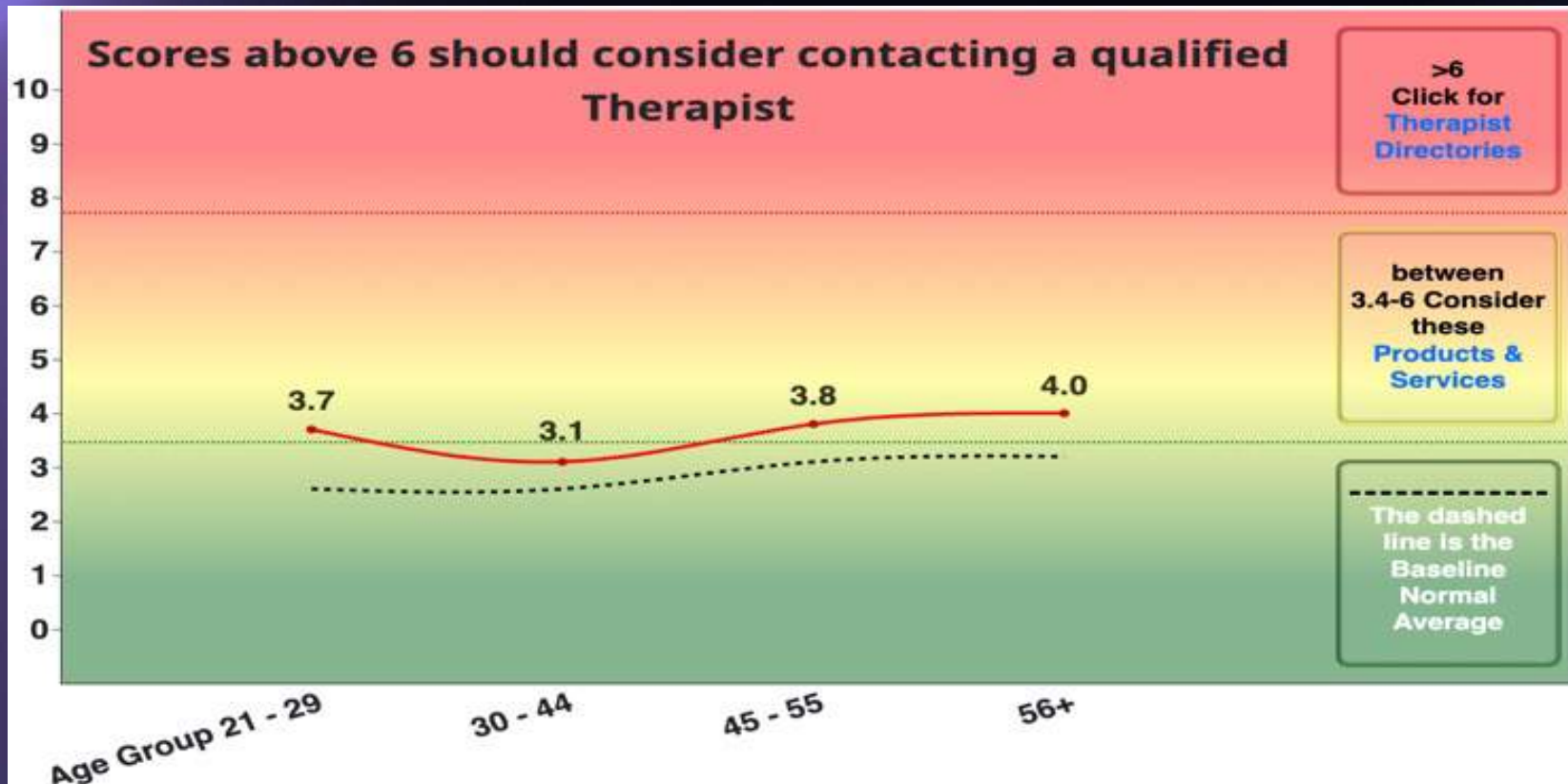
Supervised AI/machine-learning is guided by multiple highly-qualified Psychotherapists/data scientists. Evidence-based data is used to predict an individual's current/future probabilities of multiple mental health conditions. Our approach is designed to help reduce misdiagnosis and misprescription.

to predict...

Current Mental Condition Probabilities...



and predicted trajectories for multiple mental conditions.



Common Mental Health Assessments

Features		Ham-D	BDI	DSM Level 1	Clinician Visits	Amen Clinics
Anonymous	✓	✓	✓			
# Questions Analyzed	248	17	21	23	Many	Many
# Conditions Addressed	7	1	1	Multiple	Multiple	Multiple
Objective Data	✓			Some	Some	✓
Biometric Correlation	✓			Some	Some	✓
Brain Wave Correlation	✓					✓
DNA Expressions	✓			✓	✓	✓
Family History	✓			✓	✓	✓
Childhood Development	✓			✓	✓	✓
Future Predictions	✓					
"What If" Capability	✓					?
Graphic Reports	✓					
Cost	\$\$	free	free	\$\$	\$\$\$	\$\$\$\$

Target Markets in Canada & The U.S.

- Public and private health Insurance Companies
- Primary physicians
- First Responders
- Law enforcement & Security
- Airlines

Our Mindbalance acquisition – US market entry point

Why Choose Mindbalanced?

Discover What Makes Mindbalanced Your Perfect Health Partner.



Objective Whole-Life Correlations:

Integrate YMI, PGx testing, and TMS for objective insights into genetic predispositions, neural activity, and mental health outcomes over time.



Enhanced Diagnostic Precision:

Gain unprecedented insights into genetic susceptibilities, neural dynamics, and symptoms, enabling accurate diagnosis and personalized interventions.



Optimized Treatment Pathways:

Empower clinicians to tailor treatments based on genetic profiles, neurophysiological responses, and predictive risk assessments for optimized therapeutic outcomes.



Mitigation of Misdiagnosis:

Address mental health misdiagnosis and overdiagnosis with our synergistic approach, promoting efficient resource allocation and improved patient outcomes.



Corporate Management

Joshua Hill
President

Josh is the Founder of Mindbalanced Inc., a recent nDatalyze acquisition. Drawing from his experience at a leading TMS manufacturer, Josh has implemented effective strategies across over 40 clinics, optimizing patient care and operational efficiency on a significant scale. By combining genetic insights with environmental factors, he has tailored solutions to meet the unique needs of each individual.

Dusan Kuzma
MBA, MSc, Director

Experienced in product development and commercialization, Mr. Kuzma has served on the advisory board for advanced manufacturing technologies in Canada at the Information and Communications Technology Council.

James Durward
CEO/CTO
Director

A data scientist with over a decade of experience in image analysis, pattern recognition, and database development. He is a patented, published inventor with extensive public company experience.

Dwayne Vinck
CA, CFO

Mr. Vinck brings various business experiences, including financial reporting, directorships, executive leadership, change management, and project leadership. He also has experience in mergers and acquisitions and public company experience.

Steve Price
P.Eng, Director

With over 35 years of experience in engineering and management, including corporate operations, evaluations, and facilities design and operation, Mr. Price brings valuable expertise. He also has public company experience.

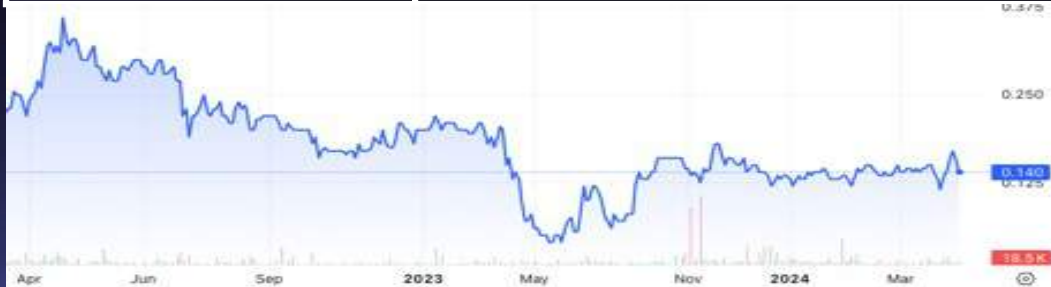
Gordon Crawford
P.Eng, Director

Mr. Crawford has over 30 years of engineering experience, including management roles in prestigious engineering firms. He was also a Co-Founding Partner and Vice President of a well-established mid-sized EPC engineering firm.

Share Metrics

(as of April 16, 2024)

CSE: NDAT OTC: NDATF	
Market Cap	~C\$5.6M
Recent share Price	C\$0.14
52 Week Range	C\$0.04 - C\$0.18
Shares Outstanding	41 M
Management Ownership	~27%



nDatalyze
Corp.

CSE: NDAT
OTC: NDATF

Contact Us

Revenue matters:

Josh Hill, President

Josh@mindbalanced.org

Investor matters:

Jim Durward, CEO/CTO

jimd@ndatalyze.com

(403) 689-3901